

2025 ARTISAN TOUR

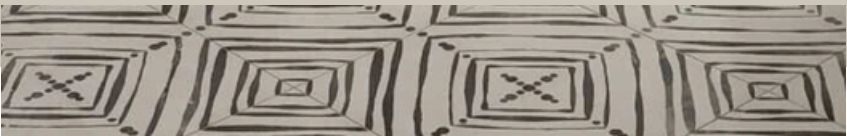


THE SOLTERRA²⁰²⁵

WEST LAKELAND TWP, MN

C&E WURZER BUILDERS

CEWURZEBUILDERS.COM



C&E WURZER BUILDERS

BUILT WITH TRUST



The team at C&E Wurzer Builders takes the time to understand our clients' desires, aspirations, and lifestyle. Each detail is meticulously curated to not only meet the practical needs of our clients but also to reflect their individuality and personal style. From the layout to the finishing touches, our aim is to create spaces that not only look beautiful but also enhance the lives of our homeowners, embodying the essence of who they are.

BEHIND THE DESIGN

Nestled in a private neighborhood near the scenic St. Croix River, this sleek and expansive contemporary home offers 6 bedrooms, 7 bathrooms, and 6,803 square feet of meticulously designed living space. Perfect for those who love to entertain, it provides generous room and a range of recreational amenities for gatherings of any size.



EXTERIOR FEATURES

The exterior features stucco siding, with sections of beautiful cedar accents that add pops of color and warmth to the modern design.



ARTISAN

SELECTIONS

Contemporary touches such as the custom metal interior and exterior railings, floating staircase, and modern light fixtures create an ambiance of chic sophistication throughout, while custom rift-sawn white oak cabinetry and flooring infuse the spaces with warmth and texture.

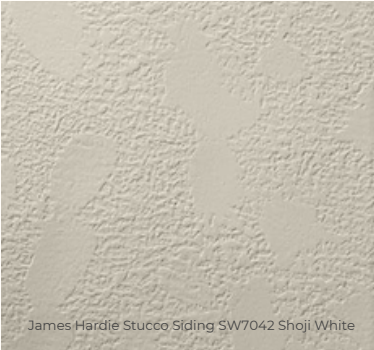
Wood accent pane SW3504 Woodridge

Horizontal Ban Boards SW7045 Intellectual Gray

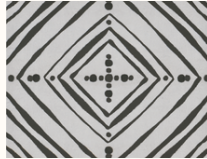


Custom rift-sawn white oak cabinetry

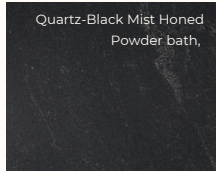
CONTEMPORARY TOUCHES



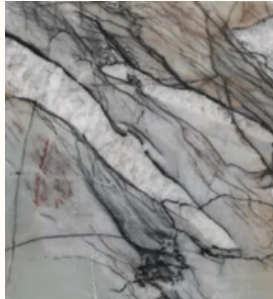
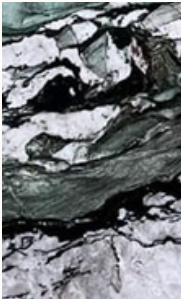
James Hardie Stucco Siding SW7042 Shoji White



Tile, Nikki Chu Tangier



Quartz-Black Mist Honed Powder bath,



INTERIOR FEATURES

Open Concept with a Splash

The open-concept interior features a well-lit living room with high ceilings, a gourmet kitchen with a large island and butler's pantry, and a dining area that flows directly to the indoor pool and entertaining area.

Suite Retreat meets Productive Spaces

The upper level offers multiple bedrooms with ensuite bathrooms as well as a dedicated home office/homework area.

Refined Lower-level Recreation

The finished basement provides plenty of space to entertain, with a home theater, golf simulator, and temperature controlled wine room, all enhanced by clean lines and high-end finishes.

Sauna, Screens & Style

A custom sauna and outdoor living space and kitchen - outfitted with Phantom Screens - are the perfect finishing touches to this fun and functional home.

PROCESS SELECTIONS

01 LUMBERYARD

Siding, roofing, interior railing,
hardware, doors and trim.

GARAGE DOORS 02

Overhead garage doors.

03 APPLIANCES

Choosing your interior appliances.

FIXTURES 04

Plumbing fixtures, towel
bars, and light fixtures

05 CABINETS

Cabinet designs, door styles and
wood species and color/finish.

FIREPLACE 06

Choosing your fireplace
design, if applicable.

07 STONE

Interior and exterior design
options including fireplace.

INTERIOR DESIGN 08

Title showers, backsplashes,
countertops, and flooring.

FIRST-TIME QUALITY

First time quality (FTQ), is the guiding principle and core of the building process at C&E Wurzer Builders. This meticulous approach, driven by an unwavering attention to detail, ensures that every corner, nook, and cranny of our custom homes meets the highest standards right from the start. At C&E Wurzer Builders, dedication to FTQ goes beyond a mere commitment; it is a promise that translates into fewer hiccups down the road, guaranteeing a smooth and seamless building journey for our clients. We take immense pride in delivering not just houses, but homes that go above and beyond expectations, embodying the essence of craftsmanship and quality that defines our brand.



OUR PROCESS

01 INITIAL MEETING

At C&E Wurzer Builders, we like to meet with clients in a face to face open dialogue setting to discuss the home building experience. During this initial meeting, we encourage any questions you may have about building a new home or starting a renovation. It's our goal that this meeting helps us all better understand your vision for your new home. Price points, product selections and other building applications help us arrive at a preliminary estimated cost for your home. From here, we may also determine a home site visit may be in order to increase our mutual understanding of your build site.

02 DESIGN SCHEDULE

With the information we discussed at our initial meeting, (desired square footage, proposed floor plan type, etc.,) we coordinate and set up an in-person or Zoom meeting with the designer/draftsperson to begin work on determining the floor plan and design elements that truly make your new construction home the custom home you desire. The best way to communicate your vision to us is through photographs. Maybe you have seen a Parade Home or Model that has stuck in your mind, a floor plan that suits you perfectly, or you have come across Pinterest boards or Houzz posts that truly resonate with you. We find that real life examples and photos are the best starting points. If you know what you want your exterior to emulate, email us a picture of it. We would encourage the same process for various desired design features in your new home. After a thorough interview of how you plan to use your spaces, special heirloom furniture you may be bringing with you to your new home, or any particular views you desire to highlight, our Architectural Designer/Draftsperson incorporates all of this vital information into initial floor plan design concepts.



03 BID AND BUDGET

At C&E Wurzer Builders, we have built our reputation on our strong commitment to detailed communication. With our extensive knowledge of construction costs and our commitment to transparency in our process, the Team at C&E Wurzer Builders invests time and energy on the front end of our process to ensure the desired outcome!

04 PROPOSAL PRESENTATION

At this point in our process, we are ready to further discuss and fine tune details. We meet to discuss what is included in your custom home build, further clarify details and strategize next steps.



At C&E Wurzer Builders, we believe you should feel connected to your custom home journey—every step of the way.

That's why we provide real-time updates, detailed daily logs, and a user-friendly online dashboard and job tracking tool to keep you informed from start to finish.

With itemized and categorized expenses, calendar updates, easy change order approvals, and a personalized photo album, you'll always know exactly where things stand—right from your phone or computer.

It's all about transparency, convenience, and bringing your vision to life with confidence.

BUILDING TRUST THROUGH TRANSPARENCY



At C&E Wurzer Builders, we place intentional focus on the front end of our building process—because we know that understanding your vision from the start makes all the difference. We take the time to connect with you, learning the nuances of your lifestyle and what makes a house truly feel like home.

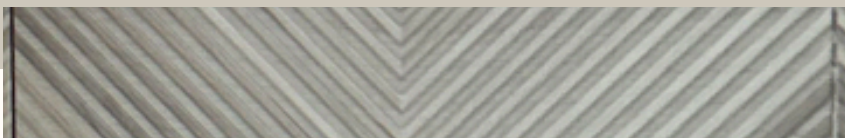
Every home has its own personality, and we honor that by blending functionality, craftsmanship, and thoughtful design tailored specifically to you.

We don't just build houses—we create personalized sanctuaries that reflect who you are and how you live.

C&E WURZER BUILDERS

CEWURZERBUILDERS.COM

651-383-7134



MN LIC #BC67806